

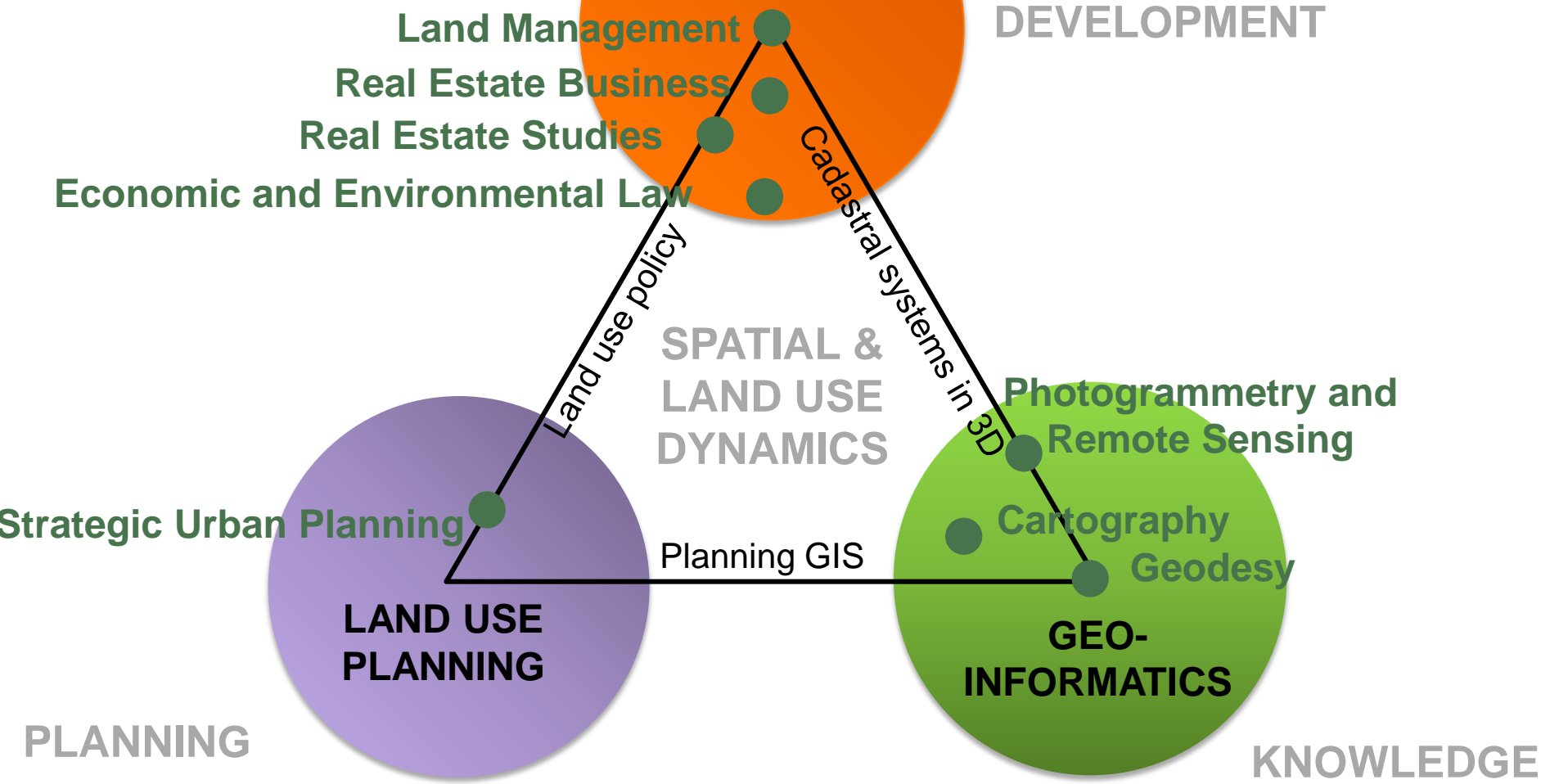
Doctoral Education at Aalto University School of Engineering and Doctoral Programme in the Built Environment (RYM-TO)

Prof. Kauko Viitanen

Head of the Dept. of Real Estate, Planning and
Geoinformatics

ERES Educational Seminar, Espoo 30.11.2012

Existing professorships at the Department



The Doctoral Programme of Engineering

- consists now of 18 research fields e.g.
 - land use planning and urban studies,
 - real estate economics,
 - environmental law
 - geoinformatics
- In the future most likely 5 research fields, e.g.
 - Sustainable built environment
- Studies nowadays 40 ECTS + doctoral thesis
- In Real Estate Economics about four doctor's per year

National Doctoral Programmes

- Doctoral programmes is a national structure which was established in the late 90'ies
- Doctoral students studying in national doctoral programmes receive a basic salary financed by the Ministry of Education and Culture
- The Academy of Finland supports organising the activities in the programmes giving annually about 3500 €/MEC per financed student place
- The programmes and student places in them was applied every second year for four years period

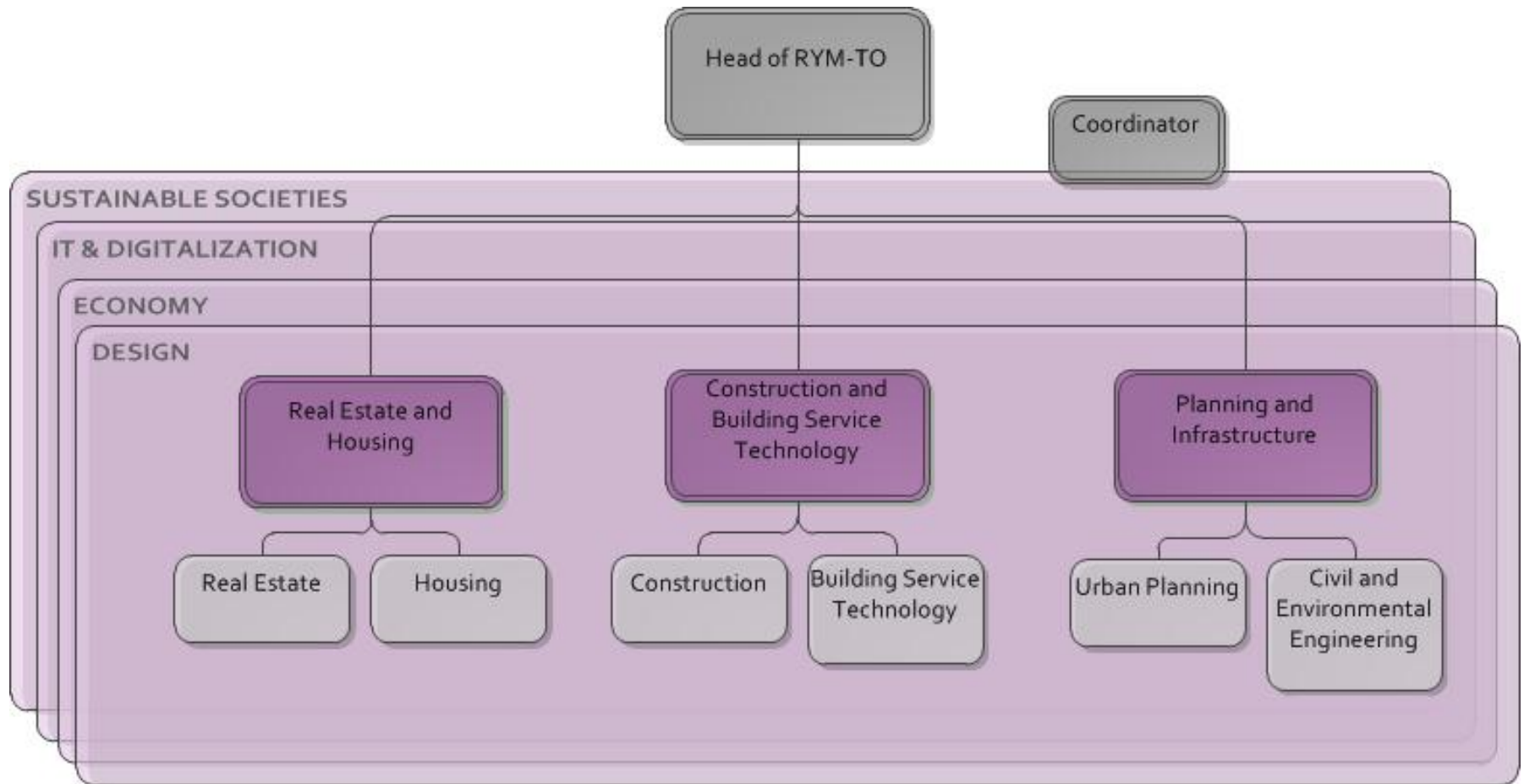
National Doctoral Programmes

- Students apply to the special programmes
- Normally the student place has been filled in for four years, reviewed after second year
- One student can be financed for max. four years
- The system is going to be finished at the end of 2015
- After that the universities shall alone take the responsibility to arrange doctoral programmes

Doctoral Programme RYM-TO

- Originates from the Graduate School in Real Estate and Facilities Management which started 2003
- The present name RYM-TO was taken 2010
 - combines old doctoral programmes and new units
 - Wood Construction and Planning from 2012
- Consists of seven universities and two research institutes
- Over 80 affiliated professors
- Covers extensively research and doctoral education in the field of Built Environment in Finland

Organisation and fields



Organisation

- The Doctoral Programme in the Built Environment is governed by an Executive Board representing all participating universities.
- Daily operations are overseen by the Head of the Board with the assistant and coordinator supporting and preparing the decisions making process.

- Head of RYM-TO Prof. Kauko Viitanen
- Assistant Pia Pässilä
- Coordinator Arhi Kivilahti

What does the doctoral programme offer?

- **Financing**
 - **Salaried positions**
- **Other funds**
 - **travel grants and grants for research exchange**
 - **for courses and seminars**
 - **for internationalization, networking**
- **Common forum for researchers**
- **Co-operation with other Doctoral Programmes**
- **Co-operation with public and private sectors (including strategic centre for science, technology and innovation in the field of built environment, Rym Oy)**
- **Co-operation with various international partners**

Changes in the PhD positions and student activities in 2009

Accepted by attending board members

Annual General Meeting 2009, Tampere

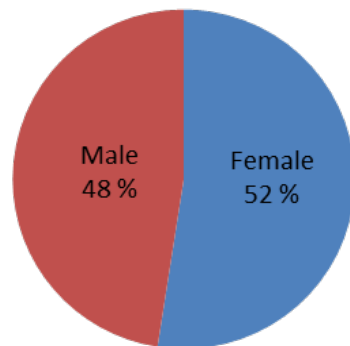


- Digium license
- RYM General meeting
- Facility Management course 2008 invoice
- Hydraulics in Environ. Eng. (31.1.2009)
- Housing seminar (26.3.2009)
- **Support ERES seminar (27.-28.3.2009)**
- Fotogrammetry (October 2009)
- Conference on Urban Structure&living environment (Autumn 2009)
- Workplace Research Seminar (5.10.2009)
- RYM Annual Meeting (November 2009)
- Construction IT seminar (8.-9.6.2009)
- Facility Management course (Autumn 2009)
- Stream restoration and sediment transport in theory and practice / Fluvial restoration: different practicers and perspectives seminar (25.-27.5.2009)
- Housing Markets (cancelled)
- Brian Atkin
- Tyttöjen tohtorikoulu (December 2009)

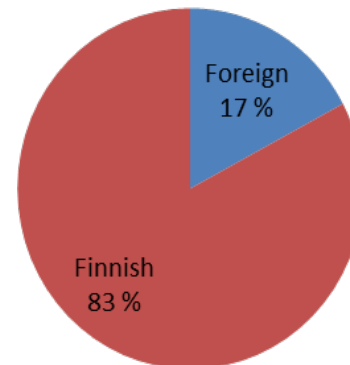
RYM-TO doctoral students

- Funded by the Ministry of Education and Culture: 32 (42 due transitions)
- Other full-time students: appr. 80
- Part-time students: appr. 300
- Graduated in 2010 and 2011: 8-9
- After 2000 -> (including previous graduate schools): appr. 100 graduated

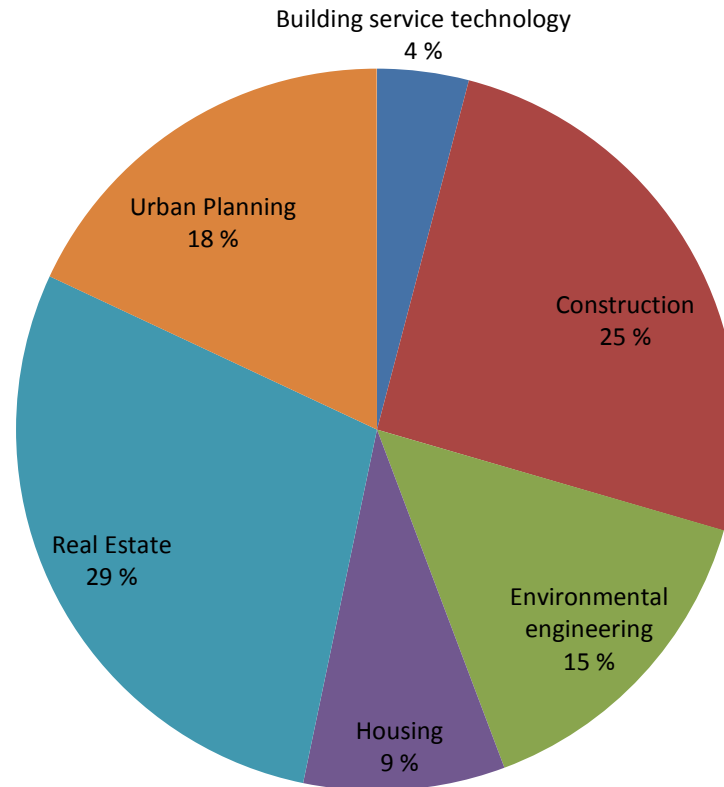
**Gender (N=122),
including 2010-2011 graduated**



**Nationality (N=122),
including 2010-2011 graduated**

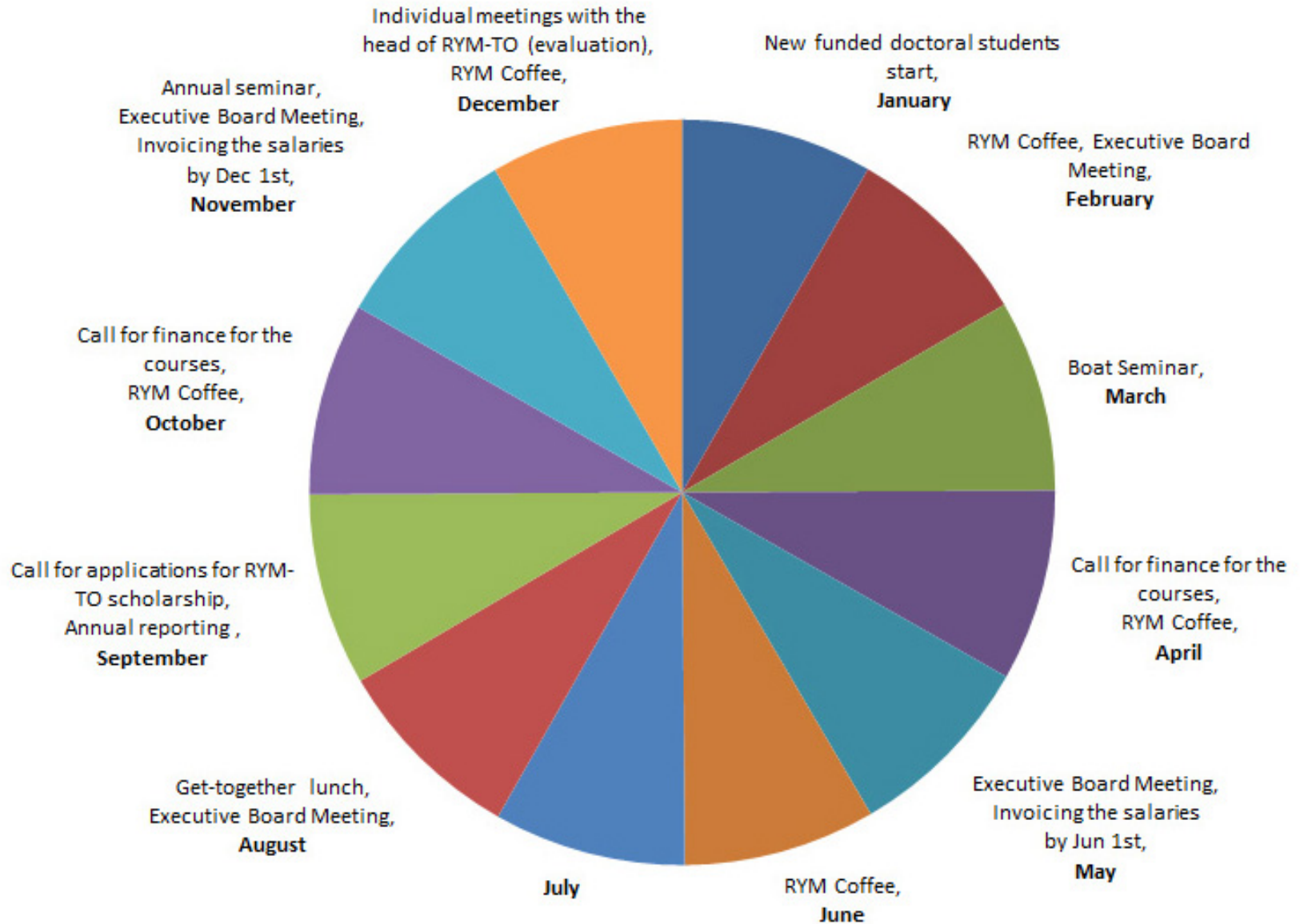


The fields of research of RYM-TO doctoral students (n=122, including 2010-2011 graduated)



- In many cases fields overlap, in this picture only one chosen

Annual activities of RYM-TO



RYM-TO Handbook

<http://rym.aalto.fi/en/>

**Total finance about one million €a year
+ finance from the departments involved**